



Western, Decora, Vega and Glowix Logos are trademark of  
WESTERN MODULAR SWITCHES PVT. LTD.  
No part of this brochure may be printed or duplicated without the consent.

Mfg. By.: **WESTERN MODULAR SWITCHES PVT. LTD.**  
(AN ISO 9001:2015 CERTIFIED CO.)  
108, Kushal Mangal Ind. Est. Sativali, Vasai (E) - 401208,  
Dist. Palghar, Maharashtra (INDIA).

**For Customer Complaints:**

Manager (Customer Care),  
**WESTERN MODULAR SWITCHES PVT. LTD.**  
108, Kushal Mangal Ind. Est. Sativali, Vasai (E) - 401208,  
Dist. Palghar, Maharashtra (INDIA).  
Customer Helpline No.: +91 9821108475  
E-Mail: [info@westernelectricals.com](mailto:info@westernelectricals.com)  
Website: [www.westernelectricals.com](http://www.westernelectricals.com)

**APPROVALS**



**MADE IN INDIA**



**WESTERN**  
SWITCHES | LIGHTING | WIRES

**Experience the epitome  
of luxury living**

**Portfolio  
Edition-1**

**HOME AUTOMATION | MODULAR SWITCHES | LIGHTING | MCB - RCCB | WIRES | PIPES**

[www.westernelectricals.com](http://www.westernelectricals.com) | [info@westernelectricals.com](mailto:info@westernelectricals.com)





# THE ULTIMATE, TOUCH OF ELEGANCE FOR YOUR WALLS



HOME AUTOMATION



Light Dimming



Air Conditioners



Curtains



AV Control



Scene



Scheduling



Voice Command



Touch Control



Smart Home

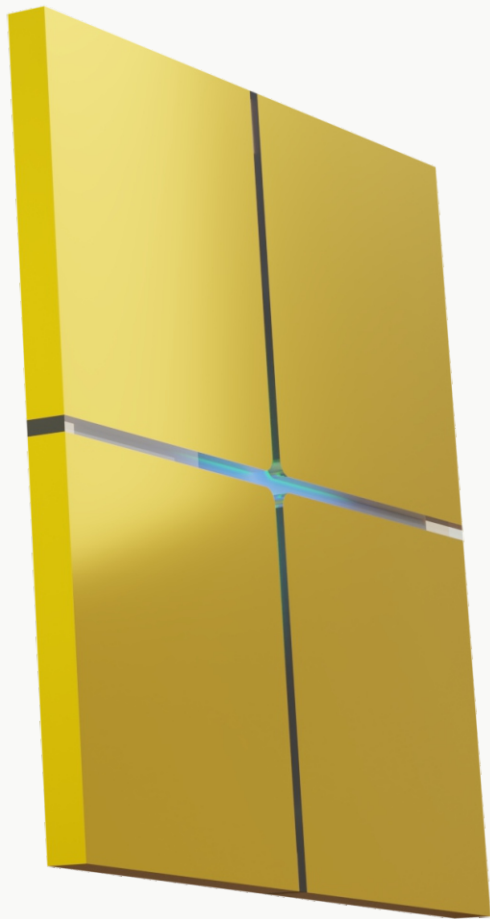


Access Remotely

We're a lifestyle company, inspired by ideas that promise more comfort, convenience, fun and peace of mind for our customers. We're consistently driven to find ways to live smarter.

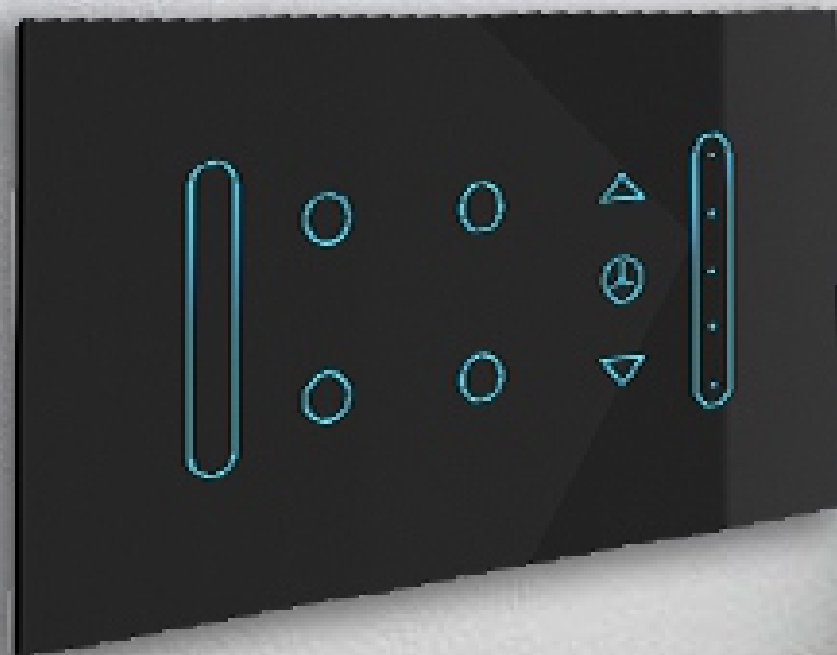
Our Home automation solutions are designed with your comfort and convenience in mind. Whether you want to create a cozy ambiance for a movie night, adjust the temperature without leaving the comfort of your couch, or automate repetitive tasks. Our intuitive systems make it all possible.

## PREMIUM SCENE CONTROLLERS



# EMPOWERING YOUR EVERYDAY INTELLIGENCE

## PREMIUM TOUCH PANEL



Western Smart Life is a unique platform that includes connected systems and products for new builds, refurbishments or to modernise existing systems. It entails a combination of solutions designed to favour comfort, energy efficiency and security, with matching styling, along with products customised to match all architectural styles. These interconnected products and systems liaise with one another continuously and in a perfectly integrated way to provide a concrete solution to the needs of those who build and enjoy spaces.

# MODULAR MARVEL



## MODULAR TOUCH AUTOMATION SYSTEM

Our solutions are designed to complement any home décor or architecture in mind- working behind the scenes and blending seamlessly into any environment.

Our technology makes homes and businesses more energy efficient, comfortable, convenient and secure with personalized features and experiences that transform a dream home into a dream way of living.



**Legend**  
BELLISSIMO MODULAR RANGE



## EVERY TEXTURE OF BEAUTY

MODULAR SWITCHES

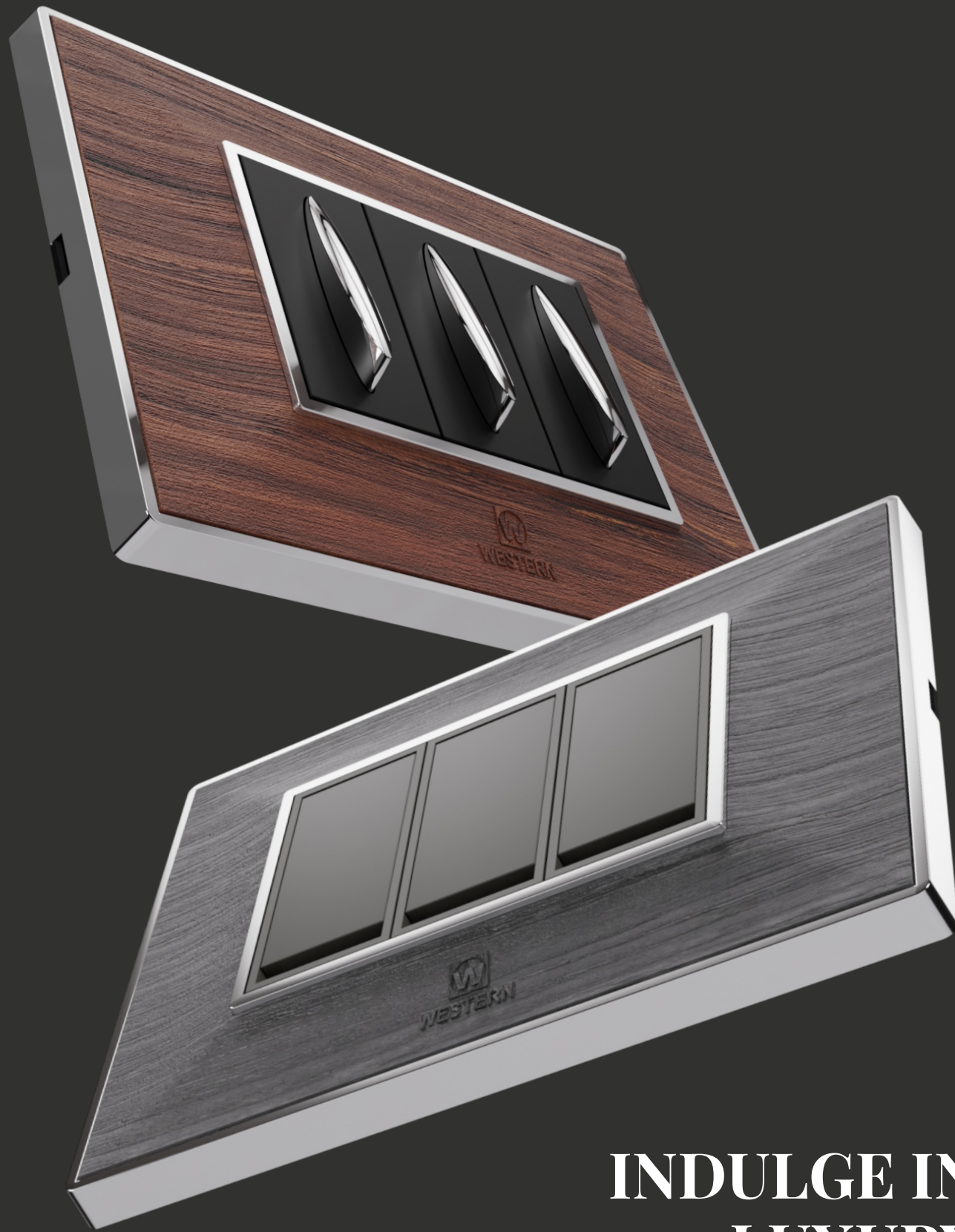


Combining the genius of innovation and the art of sophistication, Western Modular is here to make your space truly luxurious and your lifestyle indeed legendary, with its exceptional line of world-class electrical solutions and product designed to amaze in every sense. The LEGEND modular range is yet another grand addition to Western Modular's wide array of amazing electrical product that boast of sleek stylish looks, powerful yet impeccable performance and design of the highest international industry standards. Go on, switch to LEGEND and make life nothing short of legendary.





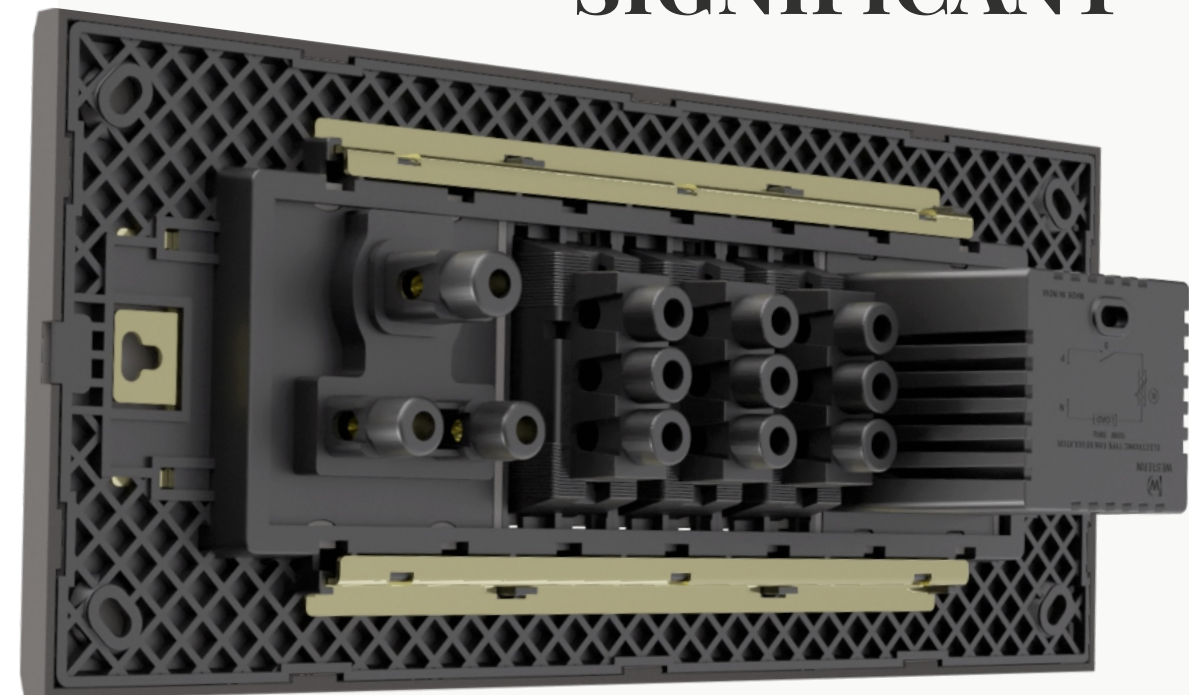
DecORA<sup>®</sup>  
MODULAR



INDULGE IN  
LUXURY



SIMPLE BUT  
SIGNIFICANT



MATRIX  
MODULAR PLATE

Experience the epitome of precise craftsmanship with our premium range of switches. Designed to elevate the aesthetics of your living spaces, our switches boast a premium look that exudes elegance and sophistication.

Unmatched in quality, our switches are meticulously crafted to ensure durability and reliability, providing you with a seamless and long-lasting experience. With a focus on both functionality and style, our switches offer a perfect blend of form and function.

**VEGA**<sup>®</sup>  
WESTERN  
**MODULAR**



**FLATRO**  
MODULAR PLATES

We proudly introduce our top quality switches designed to meet all electrical needs. Our Vega Modular Range is crafted with precision and care. Each day engineers at WESTERN work to bring about a combination of innovative design & materials using advanced manufacturing technology in order to create products that are best suited to meet user requirements.

**ELEGANCE  
IS THE ONLY BEAUTY  
THAT NEVER FADES**

*Ola* Designer  
Modular  
Plates

**GLAMOUR,  
SWITCHED ON**



**GLAMOUR**  
MODULAR PLATES

Elevate your surroundings with our Glamour plate collection and discover a new standard of elegance and functionality. Indulge in the allure of modern design as our switches seamlessly blend into any interior.



# PASSIONATE LIGHTING

## PREMIUM DOWN LIGHTS



LIGHTING

**GX**  
**GLOWIX**  
— LED SOLUTIONS —

## PANELS, SURFACE & DOWN LIGHTS



Light is the insubstantial foundation of our world. It is the first element of design, without it there is no color, form or texture. Light belongs to the heart and spirit. It attracts people, it shows the way and when we see it in the distance, we follow it. Light can be sensual, it can be comforting and with the right light at the right time, Everything Becomes Extra Ordinary.

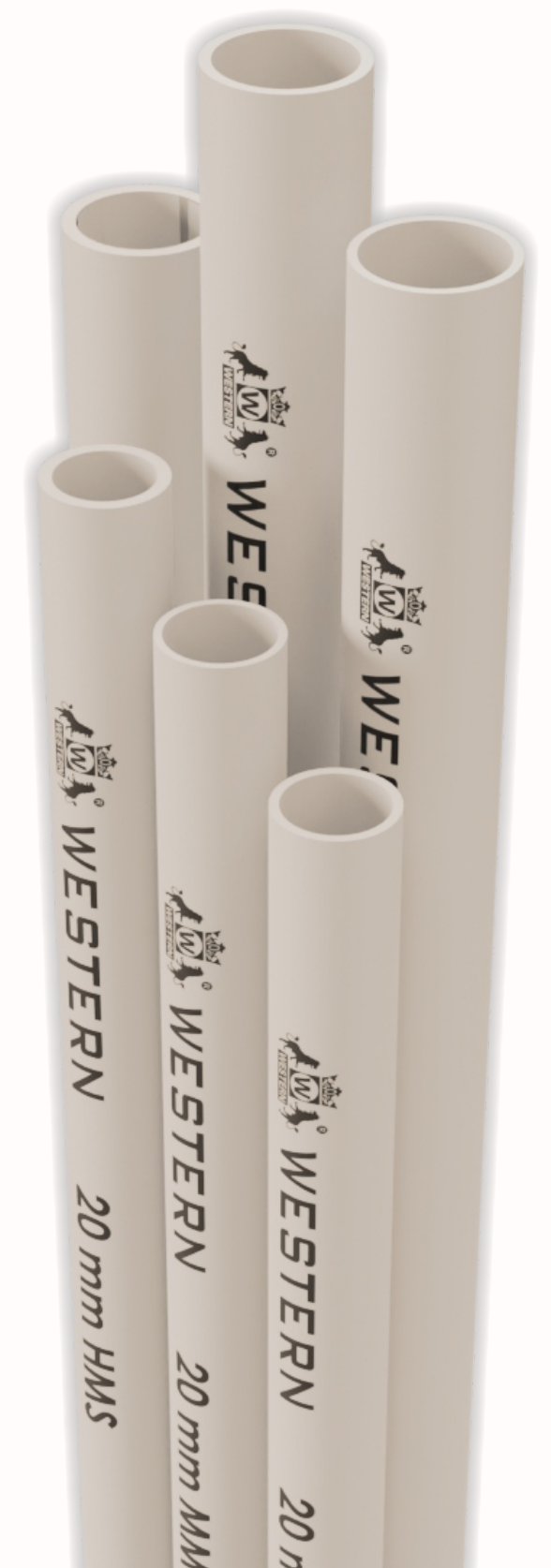


**SPARK YOUR SPACE  
WITH RADIANCE**

## uPVC CONDUIT PIPE

- ⦿ CORROSION FREE
- ⦿ THERMALLY STABLE
- ⦿ UNMATCHED DURABILITY

UPVC CONDUIT PIPE

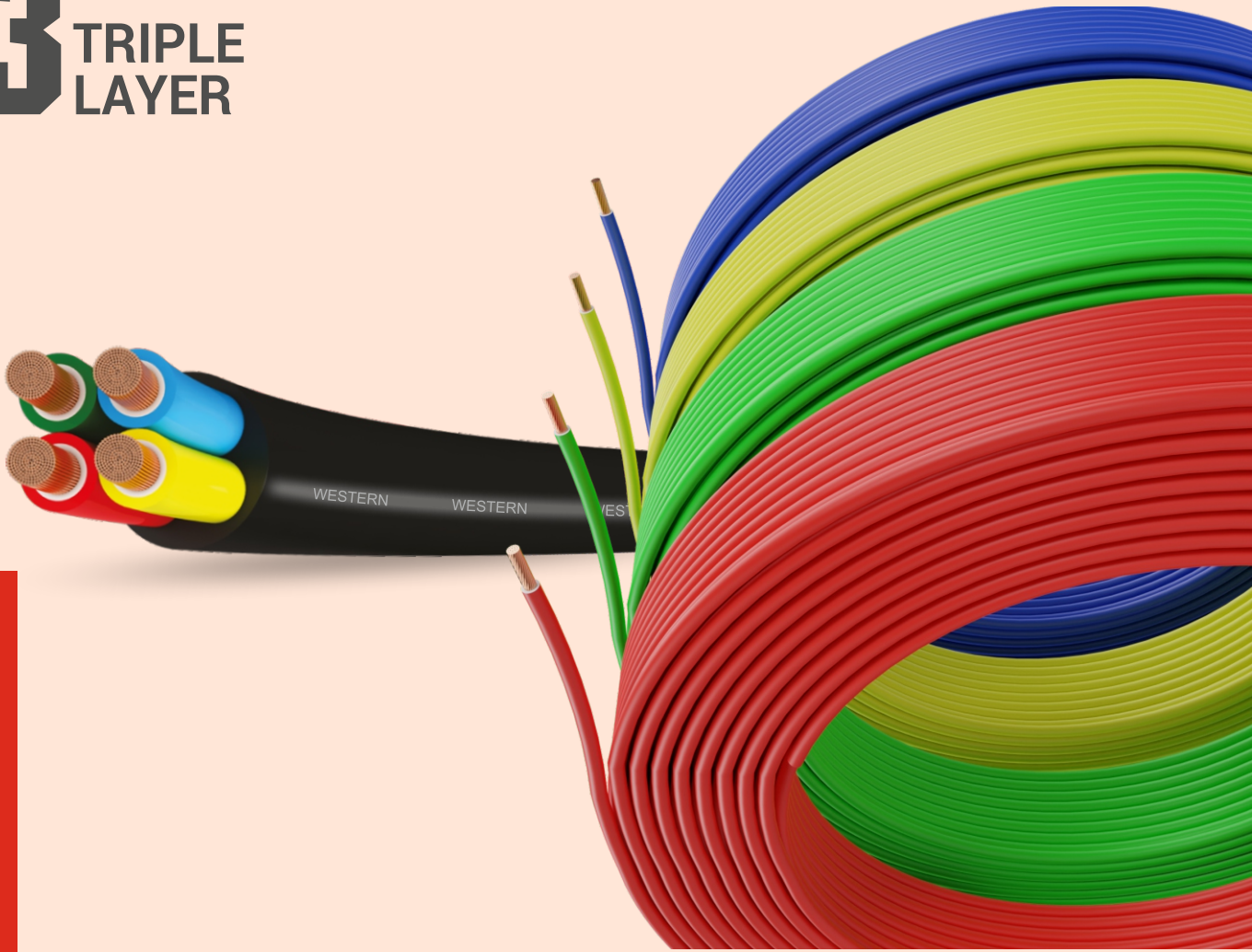




As the world becomes increasingly interconnected, the demand for reliable, high-performance wires has never been greater. We rise to meet this demand with unwavering dedication and expertise. Our wires are more than just conduits for electricity; they are the lifelines of modern society, facilitating communication, powering innovation, and driving progress. With every wire we produce, we strive for excellence, ensuring that our customers receive not just a product, but a promise of reliability and performance. Together, let us build a future where connectivity knows no bounds, and where the possibilities are limitless.

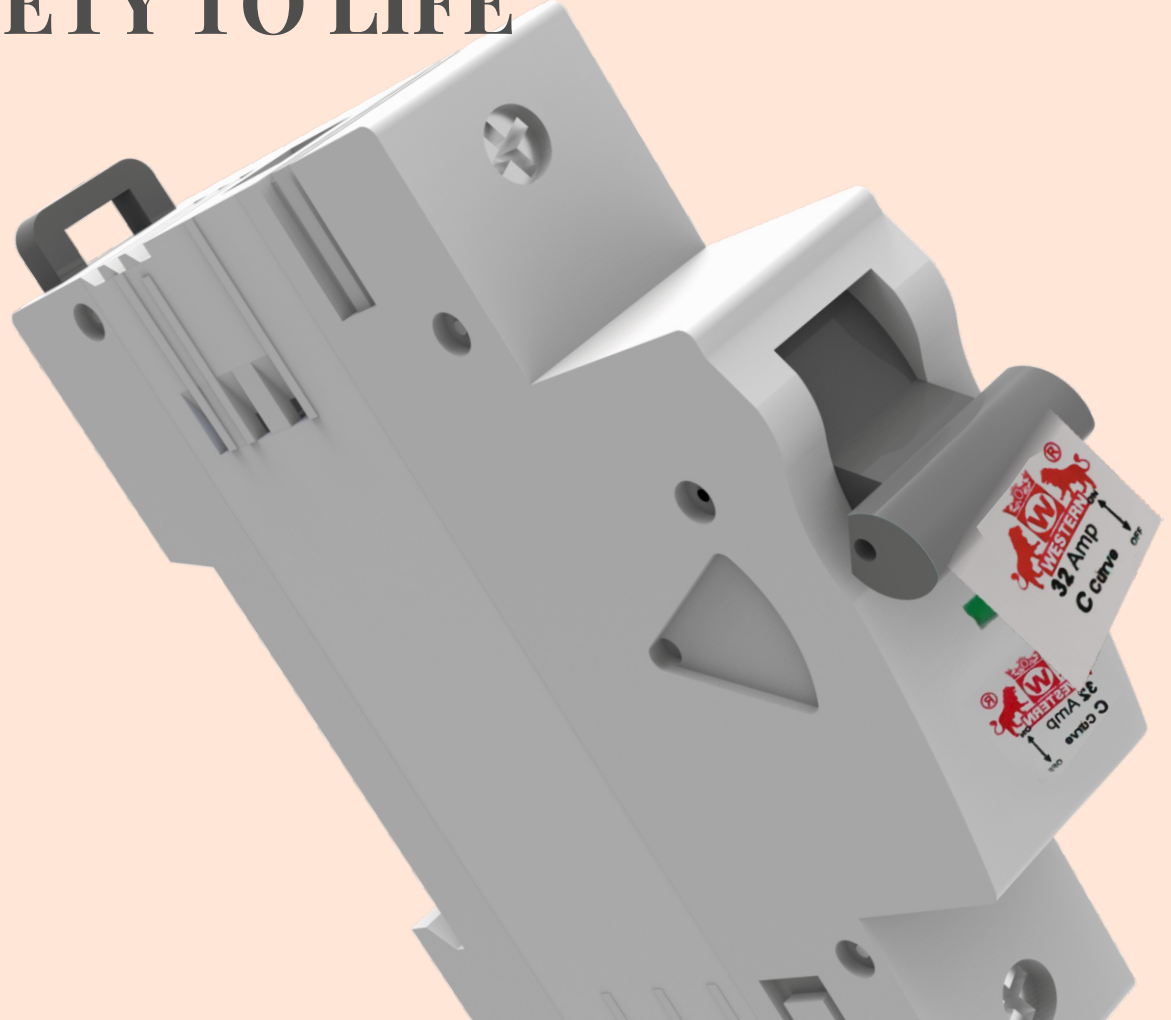
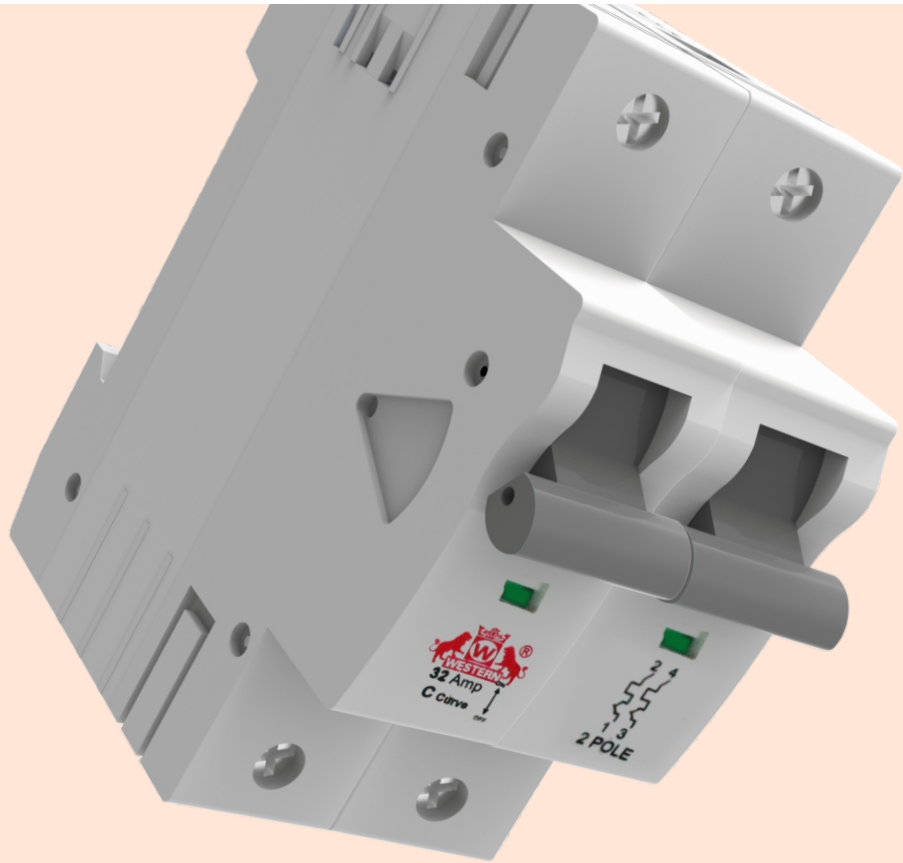
**FRLS**  
Superior Conductivity  
P.V.C. INSULATED INDUSTRIAL CABLES

**3** TRIPLE  
LAYER



WIRES & CABLES

**SWITCH ON THE  
SAFETY TO LIFE**



MCB's & RCCB's

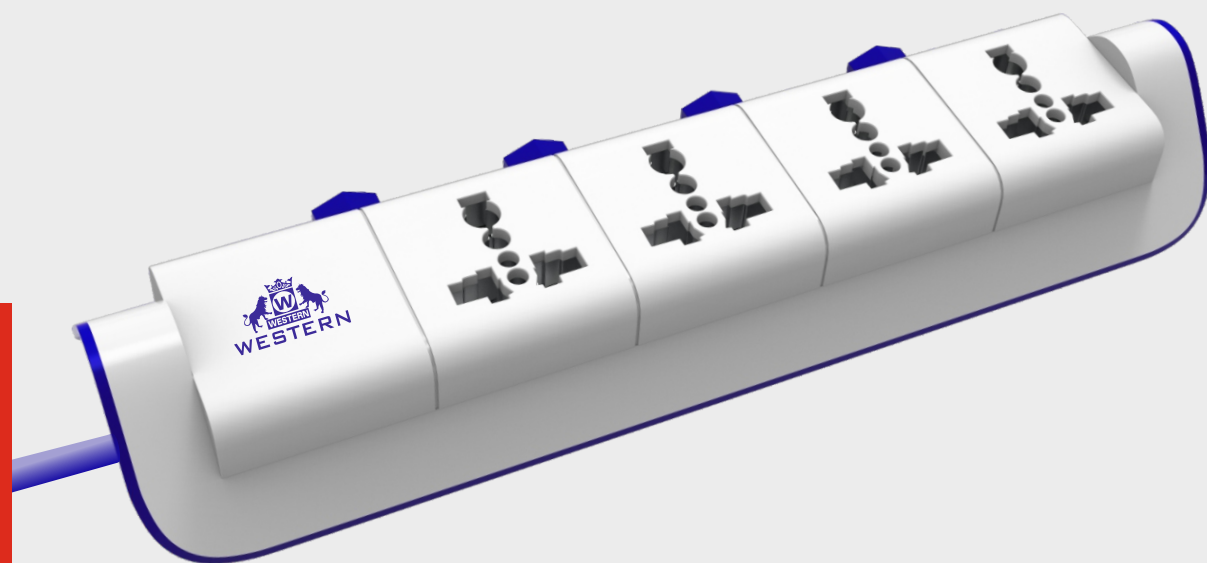
Switchgear & Protection Devices

## FLEX BOX, SPIKE GUARD



GET  
CONNECTED

ACCESSORIES



## MULTI PLUGS



POWER UP  
ANYWHERE,  
ANYTIME.

